



XCO PREDOLAC MOUNTAIN BIKE CROATIA RACE PREMIER LEAGUE BIH

MOUNTAIN BIKE CROATIA RACE – XCO Predolac UCI CLASS 1

Race rules

Race date	Sunday, 26.09.2021.
Race type	UCI Class 1
Format	XCO FORMAT (Olympic Format), circular trail – 4500 m
UCI C1	ELITE M, ELITE W JUNIORS M, JUNIORS W
category	ELITE M, ELITE W JUNIORS M, JUNIORS W, CADETS M, CADETS W, U15 (M), U15 (W), U14 (M), U14 (W), U13 (M), U13 (W), U11 (M), U11 (W), U9 (M), U9 (W), U7 (M), U7 (W), Veterans A, VETERANS B, VETERANS C, VETERANS D, SPORT, RECREATIONISTS
Organizer	BK Metković

Applications can be made via an online form at <http://grabarsport.hr/ostali-sportovi/> or sent by e-mail to grabar.sport1@gmail.com Applications close on 24.09.2021 at 11:59pm. Late applications are accepted until race day at twice the standard entry fee cost. Guests are required to provide details of any companions during check-in. Registered riders can pull out of the race until 25.09.2021. at 12pm, otherwise the entry fee will be charged to their member club.

Races are held according to the rules of **UCI, HBS and the provisions stated in this document**. Riders participate at their own risk. The organizer shall not be liable for actions made by the rider towards any third parties. All races will be running regardless of weather conditions.

Entry Fee is to be paid to BANK ACCOUNT BK Metković **HR2725000091101420121 Addiko Bank**, or in cash during race registration on the day.

Pursuant to UCI Rule 4.9.013, certain competitors are exempt from paying the entry fee

ELITE M & W, JUNIORS M & W	150.00 kn (€20)
VETERANS, SPORT, RECREATIONERS	75.00 kn (€10)
ALL OTHER Categories	free entry
UCI registered Elite MTB teams	free entry



XCO PREDOLAC MOUNTAIN BIKE CROATIA RACE PREMIER LEAGUE BIH

Unlicensed riders- all riders who do not have an annual license and want to compete in the categories of SPORT, RECREATIONISTS AND VETERANS, must purchase a one-day license. The amount of 50.00 kn for a one-day license must be paid to the bank account BK Metković **HR2725000091101420121 Addiko bankroll**. Payment confirmations and registrations are to be submitted by 28th of June at 12pm. On the day of the race unlicensed competitors are required to fill out and sign a single-day licence application. **Unlicensed riders who do not have a ONE-day license issued by HBS will not be allowed to participate in the race!**

Categories Amateur A, Amateur B, Amateur C and Amateur women competing in the BiH Premier League are not subject to licenses. They start separately from other categories at 10.30

Nearest hospital – General Hospital Dubrovnik, Dr. Rok Mišetića 2, 20000, Dubrovnik is 90 km away. [GPS Location \(42.647880224411445, 18.075869526520812\)](#)

RACE PROGRAM:

Saturday, 29.06.2019.

- on Saturday it is possible to explore the track from 3pm-7pm (parts of the trail will not be closed to traffic so please be extra careful)
- Registration, accreditation and allocation of race numbers will be at King Tomislav Square in Metkovic from 6pm-8pm [GPS Location](#) (43.053538812039726, 17.64995604179768)

Sunday, 29.04.2018.

- Training (track is open until 8am)
- Registration and allocation of the starting numbers in the Race Office which will be located near the start/finish line - from 07 am [GPS Location](#) (43.04966756091998, 17.656625230688203)
- U7, U9, U11, U13, U14, U15 – Registration until 8 am
- Cadets, sports, amateurs, veterans – Registration until 9,30 am
- Elite M, Elite W, Juniors – Registration until 12 o'clock
- Competitors who are late with registration will be able to perform with the payment of an additional amount of 10 EUR, and with the consent of the Chief Judge and the organizer.
- Team Leaders Meeting – start/finish line at 9am [GPS Location](#) (43.04969108159944, 17.656528671163976)

**** In order to prevent covid 19 disease, please have the numbers for all members of the same Club taken over by one representative of the Club. ****



XCO PREDOLAC

MOUNTAIN BIKE CROATIA RACE

PREMIER LEAGUE BIH

RACE SCHEDULE BY CATEGORY:

Start	Category	Laps	Lap length	Race length	Expected time
09:00 (08:45 Box)	U7 (M, W) (09:00)	5	220 m	1100 m	00 h 15 m
	U9 (M, W) (09:10)	3	600 m	1.800 m	00 h 15 m
	U11 (M, W) (09:20)	5	600 m	3000 m	00 h 15 m
	U13 (M, W) (09:30)	3	1340 m	4020 m	00 h 20 m
	U15 (M, W) (09:50)	5	1340 m	5360m	00 h 25 m
10:30 (10; 15 Box)	Sports	2	4500 m	9000m	01 h 20 m
	Recreationers (M, W)	2	4500 m	9000 m	00 h 40 m
	Cadets (M, W)	2	4500 m	9000 m	00 h 40 m
	Veterans A, B	3	4500 m	13500 m	01 h 15 m
	Veterans C, D	3	4500 m	13500 m	01 h 00 m
13: 00 (12:45 Box)	Elite M	5	4500 m	22500 m	01 h 45 m
	Elite W	4	4500 m	18000 m	01 h 30 m
	Juniors M	4	4500 m	18000 m	01 h 10 m
	Juniors W	3	4500 m	13500 m	01 h 10 m

The number of laps for each individual category is subject to change at the discretion of the head judge and race director.

The call out sequence will be according to the current UCI ranking, and according to the order of entries for competitors without points. The call out sequence for competitors in the BiH Premier League will be according to the current rank in the BiH Premier League. It is a requirement to carry a transponder-chip (on your wrist), to be collected an hour before the race and returned immediately after the race.

Group division and accreditation is mandatory during race number collection in the F/TZ zone.

Competitors who are behind by more than one lap will be excluded from the race at the starting line.

Nearest Hospital – Metković Health Center [GPS location--43.053539516270526, 17.647258911191805](https://www.google.com/maps/place/43.053539516270526,17.647258911191805) and Dubrovnik General Hospital, Dr. Rok Mišetića 2, 20000, Dubrovnik is 90 km away. [GPS Location - 42.64788811580432, 18.07591244186491](https://www.google.com/maps/place/42.64788811580432,18.07591244186491)

STARTING RACE:

-Start race is near the city morgue on Predolac Hill. [GPS location](https://www.google.com/maps/place/43.04969108159944,17.656528671163976) (43.04969108159944, 17.656528671163976)



XCO PREDOLAC

MOUNTAIN BIKE CROATIA RACE

PREMIER LEAGUE BIH

CASH PRIZES:

Position	Elite & U23 (M)	Elite & U23 (W)	Juniors (M)	Juniors (W)
1.	1800 kn (240 eur)	1800 kn (240 eur)	450 kn (60 eur)	450 kn (60 eur)
2.	1500 kn (200 eur)	1500 kn (200 eur)	340 kn (45 eur)	340 kn (45 eur)
3.	1200 kn (160 eur)	1200 kn (160 eur)	265 kn (35 eur)	265 kn (35 eur)
4.	900 kn (120 eur)	900 kn (120 eur)	190 kn (25 eur)	190 kn (25 eur)
5.	750 kn (100 eur)	750 kn (100 eur)	150 kn (20 eur)	150 kn (20 eur)
6.	600 kn (80 eur)	600 kn (80 eur)	110 kn (15 eur)	110 kn (15 eur)
7.	450 kn (60 eur)	450 kn (60 eur)	75 kn (10 eur)	75 kn (10 eur)
8.	375 kn (50 eur)	375 kn (50 eur)	75 kn (10 eur)	75 kn (10 eur)
9.	300 kn (40 eur)	300 kn (40 eur)	75 kn (10 eur)	75 kn (10 eur)
10.	150 kn (20 eur)	150 kn (20 eur)	75 kn (10 eur)	75 kn (10 eur)
Total	8025 kn (1070 eur)	8025 kn (1070 eur)	1805 kn (240 eur)	1805 kn (240 eur)

ANTI DOPING CONTROL:

Anti doping control will be performed at Hotel Naronia

AWARD CEREMONY:

Award ceremony will be after the end of the race on the starting/finish line at 15:00 (immediately after the end of the elite and junior category race). [GPS Location - 43.049683241373984, 17.6565394](https://www.google.com/maps/place/43.049683241373984,17.6565394)

Lunch is for competitors and their entourage from 12.00-16.00 in Hotel Naronia (drinks not included). [GPS Location - 43.054257234222646, 17.64978618606015](https://www.google.com/maps/place/43.054257234222646,17.64978618606015)

Trophies

-For the first three places in the categories: Elite (M, W), Juniors (M, W)

Medals:

-For the first three places in all categories

**** All competitors and entourage are required to adhere to the necessary epidemiological measures and recommendations to prevent the transmission of COVID-19 disease. ****



XCO PREDOLAC MOUNTAIN BIKE CROATIA RACE PREMIER LEAGUE BIH

CONTACT:

bkmetkovic@gmail.com

+ 385 (0) 99 825 6646

TRACK MAP:

XCO Predolac – distance 4500 m, total climb 226 m

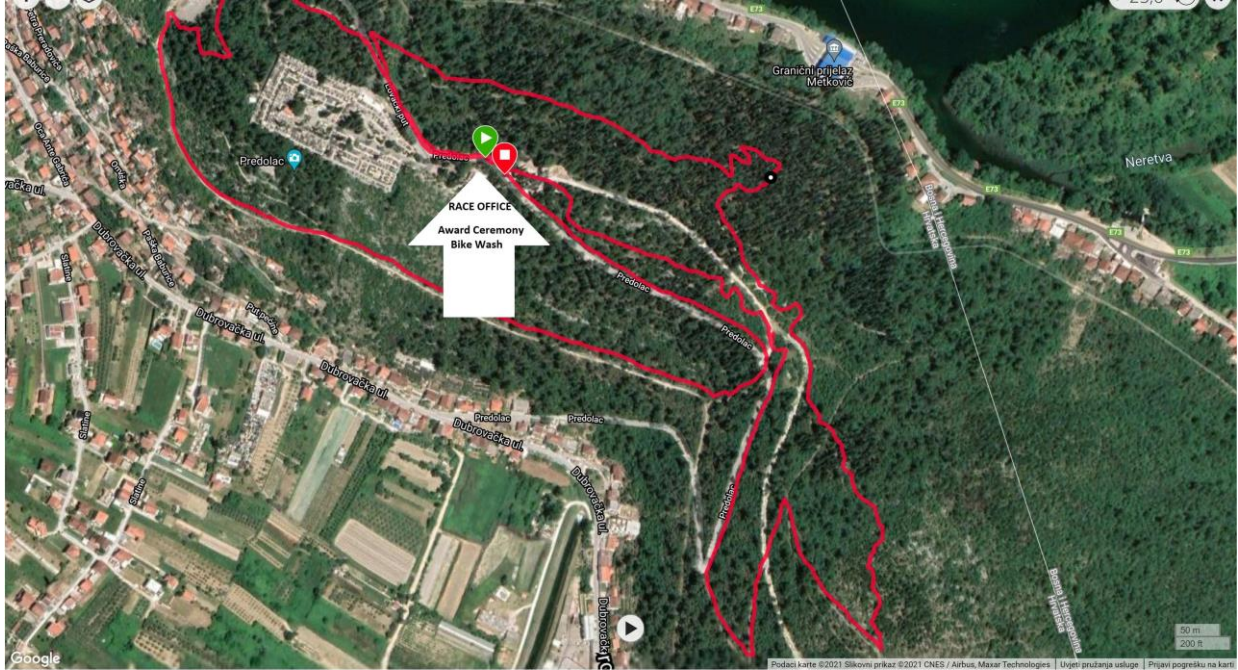


ZOOM





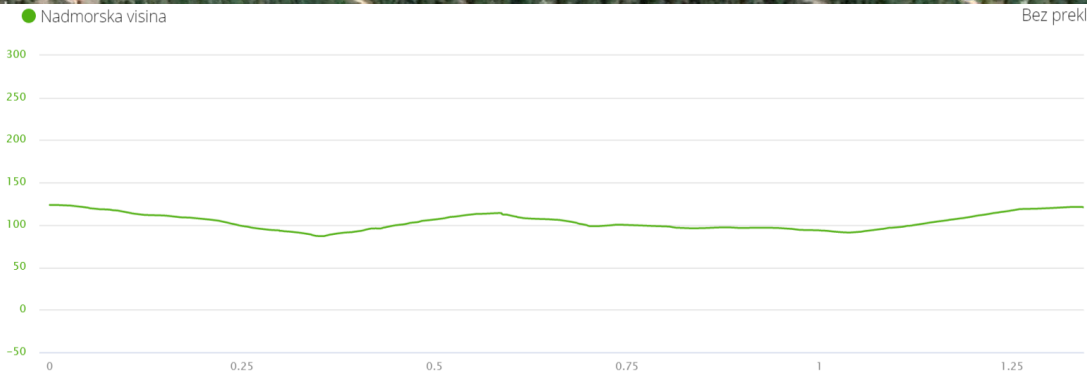
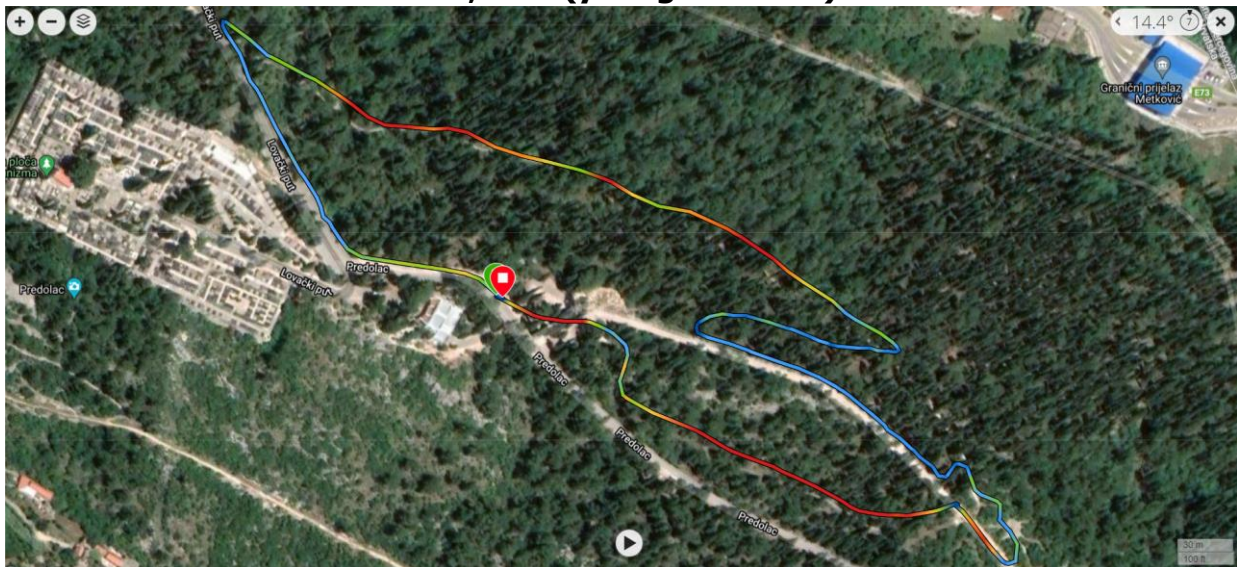
XCO PREDOLAC MOUNTAIN BIKE CROATIA RACE PREMIER LEAGUE BIH





XCO PREDOLAC MOUNTAIN BIKE CROATIA RACE PREMIER LEAGUE BIH

XCO Predolac (Midium circle) - distance 1340 m, total climb 52 m
U13, U15 (younger cadets)





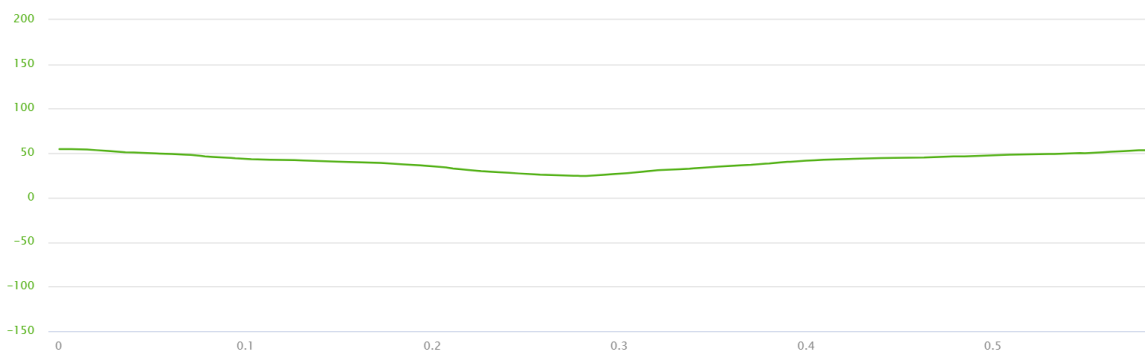
XCO PREDOLAC MOUNTAIN BIKE CROATIA RACE PREMIER LEAGUE BIH

**XCO Predolac (Small circle) - distance 600 m, total climb 22 m
U9, U11**



● Nadmorska visina

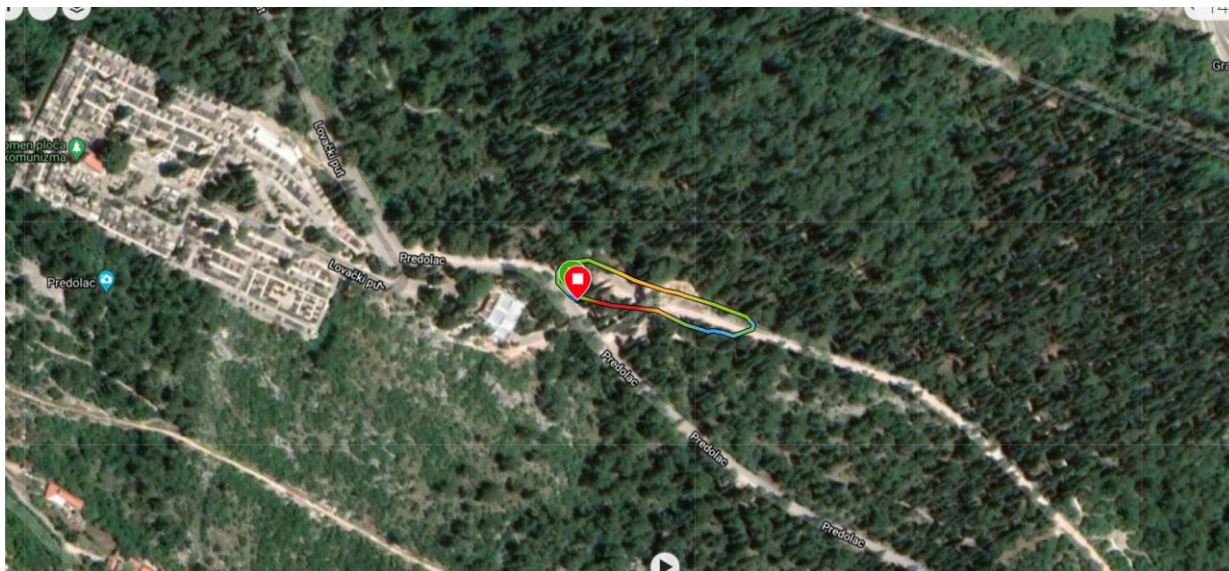
Bez preklapanja





XCO PREDOLAC MOUNTAIN BIKE CROATIA RACE PREMIER LEAGUE BIH

**XCO Predolac (Mini circle) - distance 220 m, total climb 2 m
U7**





XCO PREDOLAC MOUNTAIN BIKE CROATIA RACE PREMIER LEAGUE BIH

Accommodation:

For competitors BK Metković organised accommodation at prices of 170 (23 eur) kuna per person with breakfast for one night at the following establishments:

Hotel Narona and MB – + 385 98 193 7794 (Mile)

Restaurant Đuđa & Mate – + 385 91 187 6364 (Jure)

Hostel Livia – + 385 97 611 9126 (HELGA)

Boutique rooms Kican – + 385 91 372 0027 (Luka)

To book your accommodation please contact establishments directly.

The accommodation package also includes a ride in the traditional Neretva vessels, and a visit to the Archaeological Museum of Narona in Vid (Please book a few days earlier due to the time required to organise the boat trips)

CYCLING CLUB «METKOVIĆ»

PUT VIDA 5
20350 METKOVIĆ
Tel: 099 825 6646
OIB: 68305164949

www.bkmetkovic.com

bkmetkovic@gmail.com

