



# MOUNTAIN BIKE RACE XCO CROATIA CUP VODICE

## 19th MOUNTAIN BIKE CROATIA CUP – VODICE 2017 UCI CLASS 2

### Race regulations

<b>Date of the Race</b>	<b>Sunday, April 30, 2017</b>
<b>Race Type</b>	UCI Class 2, Croatia Cup – category A
<b>Format</b>	XCO FORMAT (Olympic Format), circular course – 5.000 m
<b>C2 categories</b>	ELITE M, ELITE W, JUNIORS M, JUNIORS W
<b>Croatia Cup categories</b>	ELITE M, ELITE W, JUNIORS M, JUNIORS W, U17 (M), U17 (W), U15 (M), U15 (W), U14 (M), U13 (M), U13 (W), U11 (M), U11 (W), U9 (M), U9 (W), U7 (M), U7 (W), MASTER A, MASTER B, MASTER C, MASTER D, SPORT, CFA

**Entry** is possible through on-line form at [www.grabarsport.hr](http://www.grabarsport.hr) or by e-mail to [grabarsport@grabarsport.hr](mailto:grabarsport@grabarsport.hr) until April 28, 12:00 AM. Late entry is also possible - entry fee for all entries after April 28, 00:00 AM, will be 100 % higher. Accompanying persons must be preregistered as well. All entries can be cancelled by April 29, 12:00 AM, otherwise the full entry fee will be charged to the participant's team.

**General regulations** - The race is regulated by the HBS MTB technical regulations and UCI MTB regulations. All participants ride on their own responsibility. The organizer is not responsible for the acts made by the cyclists to third parties. The event will take place regardless the weather conditions.

#### Entry fees

ELITE M & W, JUNIORS M&W	150,00 kn /20 €/
MASTER, SPORT, CFA	70,00 kn /9 €/
ALL OTHER CATEGORIES	no fee
UCI registered MTB teams	no fee

**Applicable Provisions** - For all that is not regulated under this present regulation, the Commissaire Panel will apply the UCI regulations and the Croatian Cycling Federation regulations in compliance with the Croatian Law.

**Meeting place** – Start/finish line NW from Vodice on the side road close to D8 state road.



# MOUNTAIN BIKE RACE XCO CROATIA CUP VODICE

**Nearest hospital** – General Hospital Šibenik , Stjepana Radića 83, 22000 Šibenik distance 15 km  
[Lokacija GPS](#)

## **PROGRAMME:**

### **Saturday, April 29, 2017**

- on Saturday the track is open for inspection between 3 PM till 7 PM
  - registration and start numbers distribution at the race office located by the cafe bar Sunčani sat, Trg dr. F. Tuđmana - Vodice from 07:00 PM to 09:00 PM
- [Lokacija GPS](#)

### **Sunday, April 30, 2017.**

- training (the course is open until 08:30 AM)
  - registration and start numbers distribution at the start/finish line – from 07:30 AM
    - U7, U9, U11, U13, U14, U15, – registration until 08:15 AM
    - Sport, CFA, U17, Master - registration until 09:00 AM
    - Elite M, Elite W, Juniors M, Juniors W – registration until 10:00 AM
  - team meeting at the start/finish line at 10:30 AM
- [Lokacija GPS](#)

## **RACE SCHEDULE:**

Start	Category	Laps	Lap length	Total length	Expected race time
<b>09:00</b> (08:45 box)	U7 (M, W) (09:00)	1	1.840 m	1.840 m	00 h 15 m
	U9 (M, W) (09:00)	1	1.840 m	1.840 m	00 h 15 m
	U11 (M, W) (09:00)	1	1.840 m	3.680 m	00 h 15 m
	U13 (M,W) (09:20)	4	1.840 m	5.520 m	00 h 20 m
	U14 (M) (09:45)	5	1.840 m	9.200 m	00 h 25 m
	U15 (M, W) (09:45)	5	1.840 m	9.200 m	00 h 25 m
<b>10:30</b> (10:15 box)	Sport	4	5.000 m	20.000 m	01 h 20 m
	CFA	2	5.000 m	10.000 m	00 h 40 m
	U17 (M,W)	2	5.000 m	10.000 m	00 h 40 m
	Master A,B	4	5.000 m	20.000 m	01 h 15 m
	Master C,D	3	5.000 m	15.000 m	01 h 00 m
<b>13:00</b> (12:45 box)	Elite M	6	5.000 m	30.000 m	01 h 45 m
	Elite W	4	5.000 m	20.000 m	01 h 30 m
	Juniors M	4	5.000 m	20.000 m	01 h 10 m
	Juniors W	3	5.000 m	15.000 m	01 h 10 m



# MOUNTAIN BIKE RACE XCO CROATIA CUP VODICE

The number of laps for each category is subject to change based on the decision of the commissairand race director

The riders will be called and lined up according to the current UCI rankings and according to the order of entries for the riders without UCI points ( in the case that riders are members of Croatian clubs and have no UCI points they will be lined up according Cro XCO Cup results

It is obligatory to carry transponders on ankles during the race and to pick them up one hour before the start and to give them back after the race

Distribution of accreditations for F/TZ zones will be at the race office and it is obligatory in F/FZ zones

Showers for the riders are in OŠ Vodice (school). Lokacija GPS

Number of laps for each category is subject to change, based on decision of the main referee or the race director. [Lokacija GPS](#)

After the race finish, lunch and award ceremony will be held at 04:00 PM in hotel Punta, Grgura Ninskog 1. Lunch is for the registered persons only (drinks not included). [Lokacija GPS](#)

**CONTACT:** [info@orlovkrug.hr](mailto:info@orlovkrug.hr) +385 95 5011 111

## CASH PRIZES:

POREDAK	ELITE M		ELITE W		JUNIORI M/W		JUNIORI M/W	
	kn	€	kn	€	kn	€	kn	€
1.	1.170 kn	150 €	1.170 kn	150 €	380 kn	50 €	380 kn	50 €
2.	940 kn	120 €	940 kn	120 €	310 kn	40 €	310 kn	40 €
3.	700 kn	90 €	700 kn	90 €	230 kn	30 e	230 kn	30 e
4.	590 kn	75 €	590 kn	75 €	140 kn	18 €	140 kn	18 €
5.	470 kn	60 €	470 kn	60 €	120 kn	16 €	120 kn	16 €
6.	420 kn	55 €	420 kn	55 €				
7.	380 kn	50 €	380 kn	50 €				
8.	330 kn	43 €	330 kn	43 €				
9.	280 kn	36 €	280 kn	36 €				
10.	230 kn	30 €	230 kn	30 €				

KAT.	5.510 kn	709 €	5.510 kn	709 €	1.180 kn	154 €	1.180 kn	154 €
------	----------	-------	----------	-------	----------	-------	----------	-------

UKUPNO: **13.380 KN**



# MOUNTAIN BIKE RACE XCO CROATIA CUP VODICE

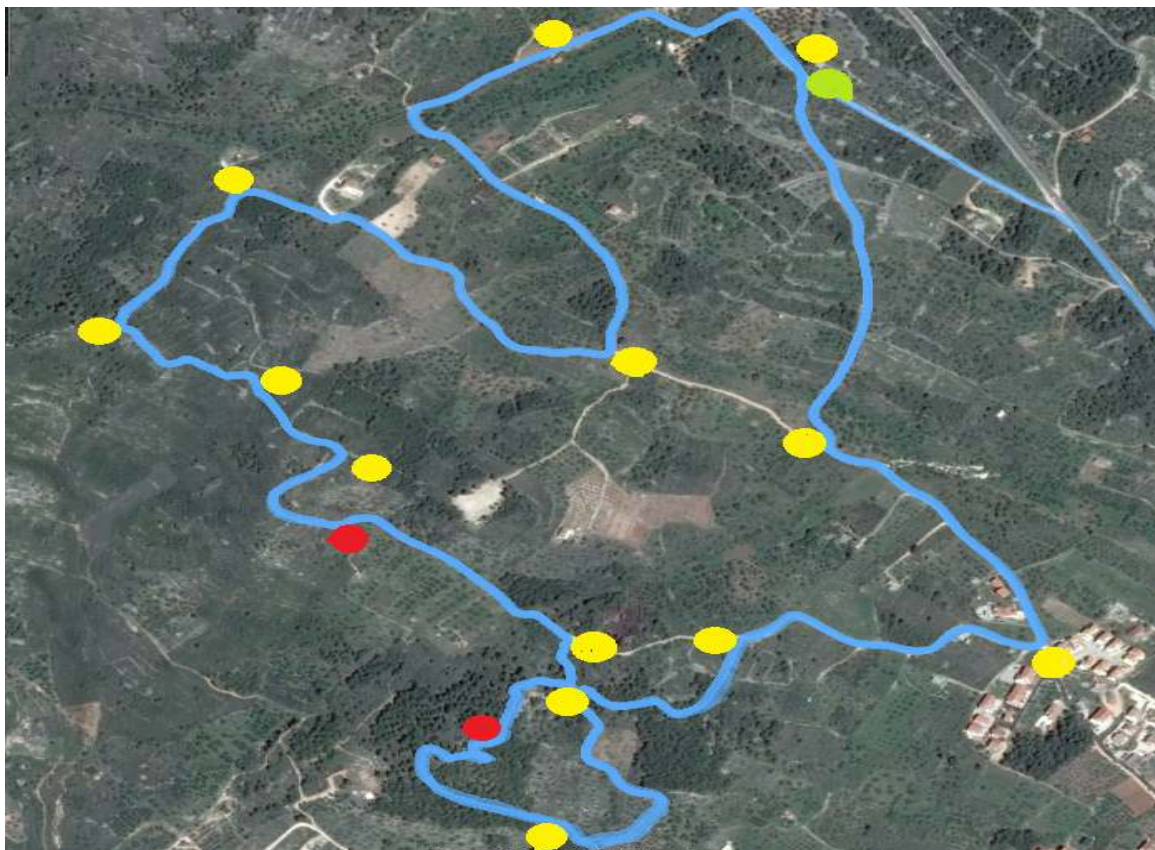
## CUPS:

- top 3 riders in categories: Elite (M,W), Juniors (M,W), U17 (M,W), Master, Sport, CFA
- top 3 Croatian teams

## MEDALS:

- top 3 riders in categories: U15 (M,W), U14 (M), U13 (M,W), U11 (M, W), U9 (M,W), U7 (M,W)

## THE COURSE:



**Yellow** – security

**Red** – GSS (downhill)

**Green** – ambulance end doctor



# MOUNTAIN BIKE RACE XCO CROATIA CUP VODICE

## COURSE PROFILE:



## ARRIVAL:

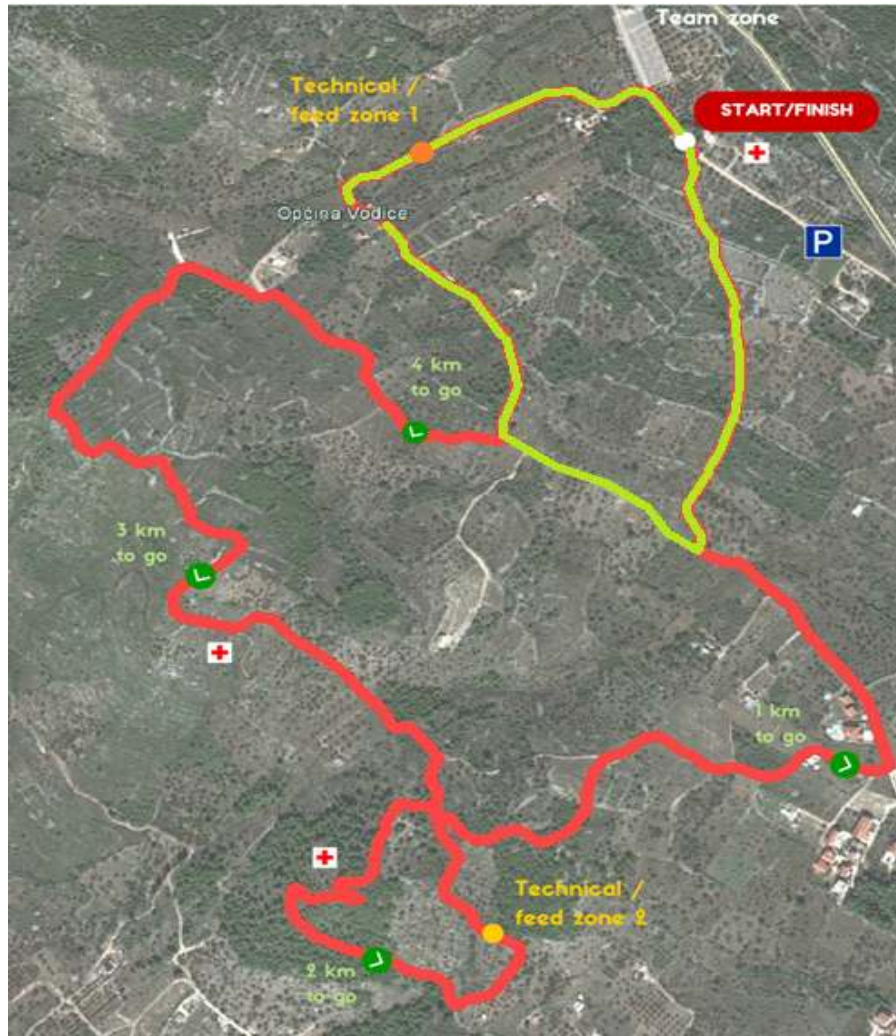
On the state road D-8 towards Zadar, driving north-west from Vodice, take left at 500 m after Lidl Supermarket. Race location signs will be set.

## ACCOMMODATION:

All information concerning the accommodation are available at [www.vodice.hr](http://www.vodice.hr) (Tourist Board Vodice).



# MOUNTAIN BIKE RACE XCO CROATIA CUP VODICE



**Small lap** 1.800 m

**Large lap** 5.000 m

**MTB CLUB « ORLOV KRUG »**

HRVATSKIH BORACA 34 22211 VODICE

CROATIA

mobile +385 95 5011 111

[www.orlovkrug.hr](http://www.orlovkrug.hr)

[info@orlovkrug.hr](mailto:info@orlovkrug.hr)